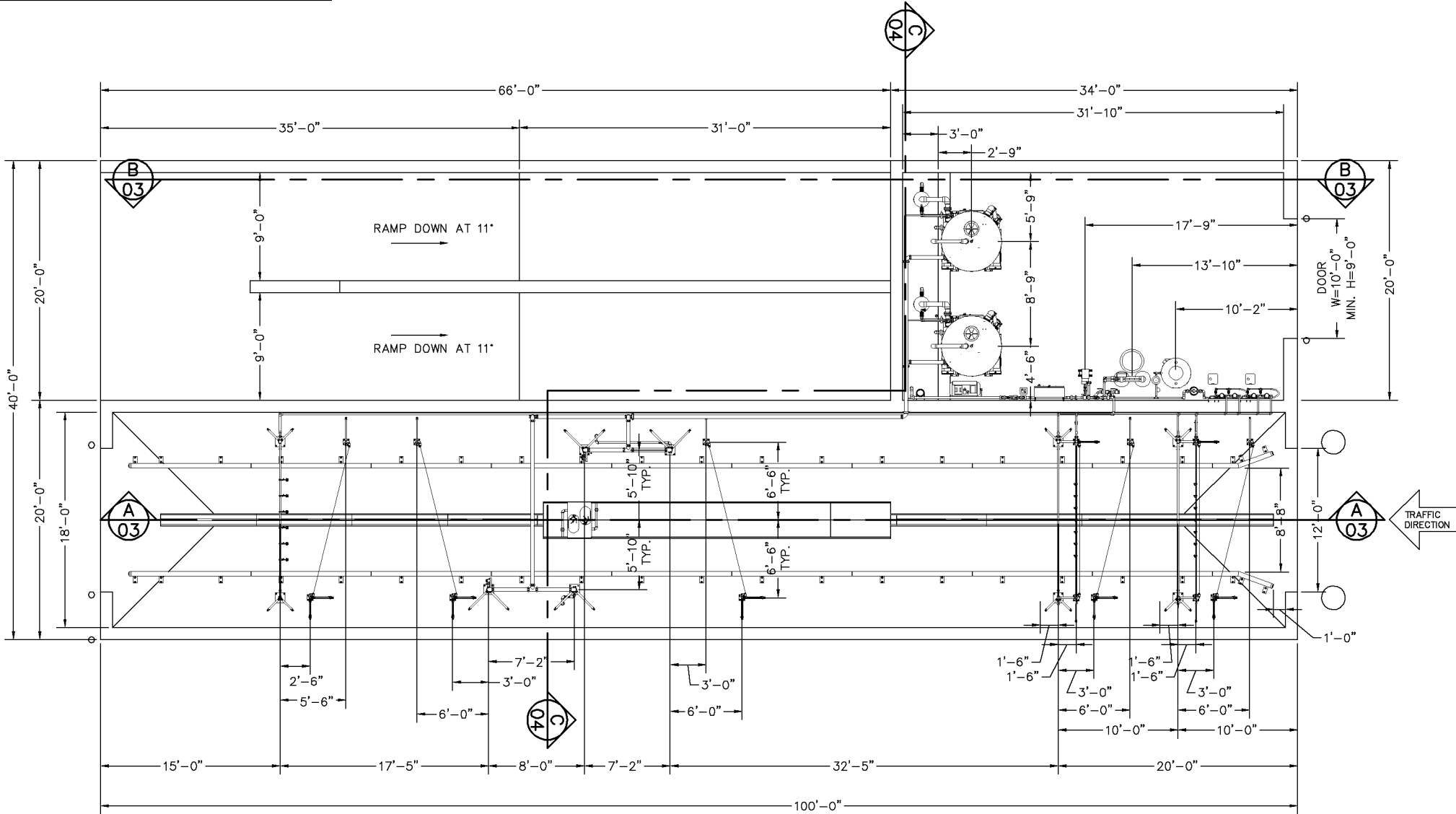


NOTE:
THIS DRAWING AND DESIGN IS THE PROPERTY OF INTERCLEAN EQUIPMENT INC. AND MUST NOT BE COPIED OR USED EITHER DIRECTLY OR INDIRECTLY FOR ANY WORK OTHER THAN THAT OF INTERCLEAN EQUIPMENT INC. WITHOUT SAID COMPANY'S EXPRESSED PERMISSION. ALL RIGHTS OF INVENTION OR DESIGN ARE RESERVED.

NOTE:
DURING INSTALLATION, MAKE SURE THE TIRE GUIDE AND ARCHES DO NOT INTERFERE WITH ENTRANCE OR EXIT OVERHEAD DOORS



08/04/08	THE STANDARD LAYOUT UPDATED	SL
R. DATE	DESCRIPTION	BY APPR

InterClean Equipment, Inc.

DESIGN: SUSAN
DRAWN: SUSAN
CHECK: APPR:
PK PK
SCALE: 3/16"=1'

FLEET WASH - TWO STEP
RECLAIM WATER TRUCK WASH SYSTEM
PLAN VIEW - WASH SYSTEM

DATE: 10/02/06
PART NO:
#LY06-RF2-02
WEIGHT: